



OFFERS IN EXCESS OF

**£525,000**

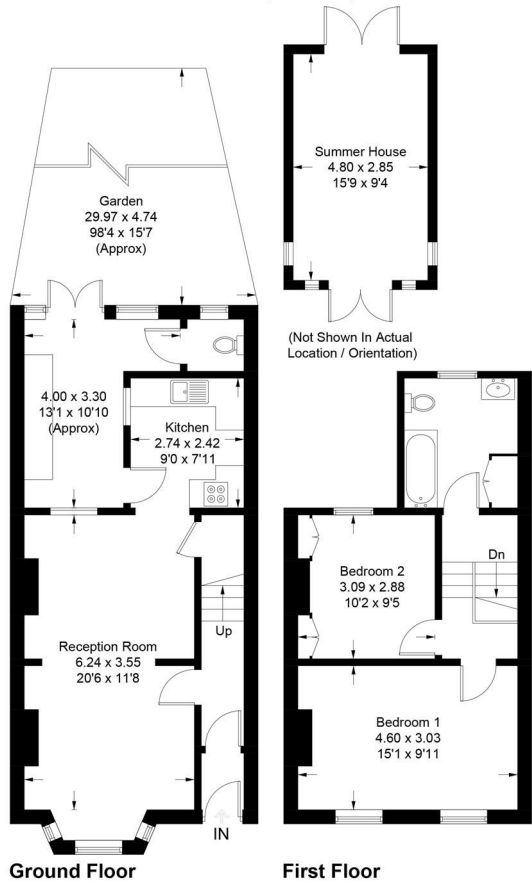
**Baston Road**

Hayes, BR2 7BS

EPC RATING: D COUNCIL TAX BAND: D

**Baston Road, Bromley, BR2**

Approximate Gross Internal Area = 85.8 sq m / 923 sq ft  
 Summer House = 13.7 sq m / 147 sq ft  
 Total = 99.5 sq m / 1070 sq ft



This plan is for layout guidance only. Not drawn to scale unless stated. Windows and door openings are approximate. Whilst every care is taken in the preparation of this plan, please check all dimensions, shapes and compass bearings before making any decisions reliant upon them. Produced by Planpix (ID656961)

2

1

1



Agents Note: Whilst every care has been taken to prepare these particulars, they are for guidance purposes only. All measurements are approximate and are for general guidance purposes only and whilst every care has been taken to ensure their accuracy, they should not be relied upon and potential buyers/tenants are advised to recheck the measurements

Energy Efficiency Rating		Current	Potential
Very energy efficient - lower running costs			
(92 plus) <b>A</b>			
(81-91) <b>B</b>			
(69-80) <b>C</b>			
(55-68) <b>D</b>		<b>68</b>	
(39-54) <b>E</b>			
(21-38) <b>F</b>			
(1-20) <b>G</b>			
Not energy efficient - higher running costs			
<b>England &amp; Wales</b>		EU Directive 2002/91/EC	



**OFFICE ADDRESS**  
 57 Station Approach  
 Hayes  
 Kent  
 BR2 7EB

**OFFICE DETAILS**  
 020 8462 0360  
 infohy@sinclairhammelton.co.uk  
<https://www.sinclairhammelton.co.uk>  
 for-sale-in-hayes/